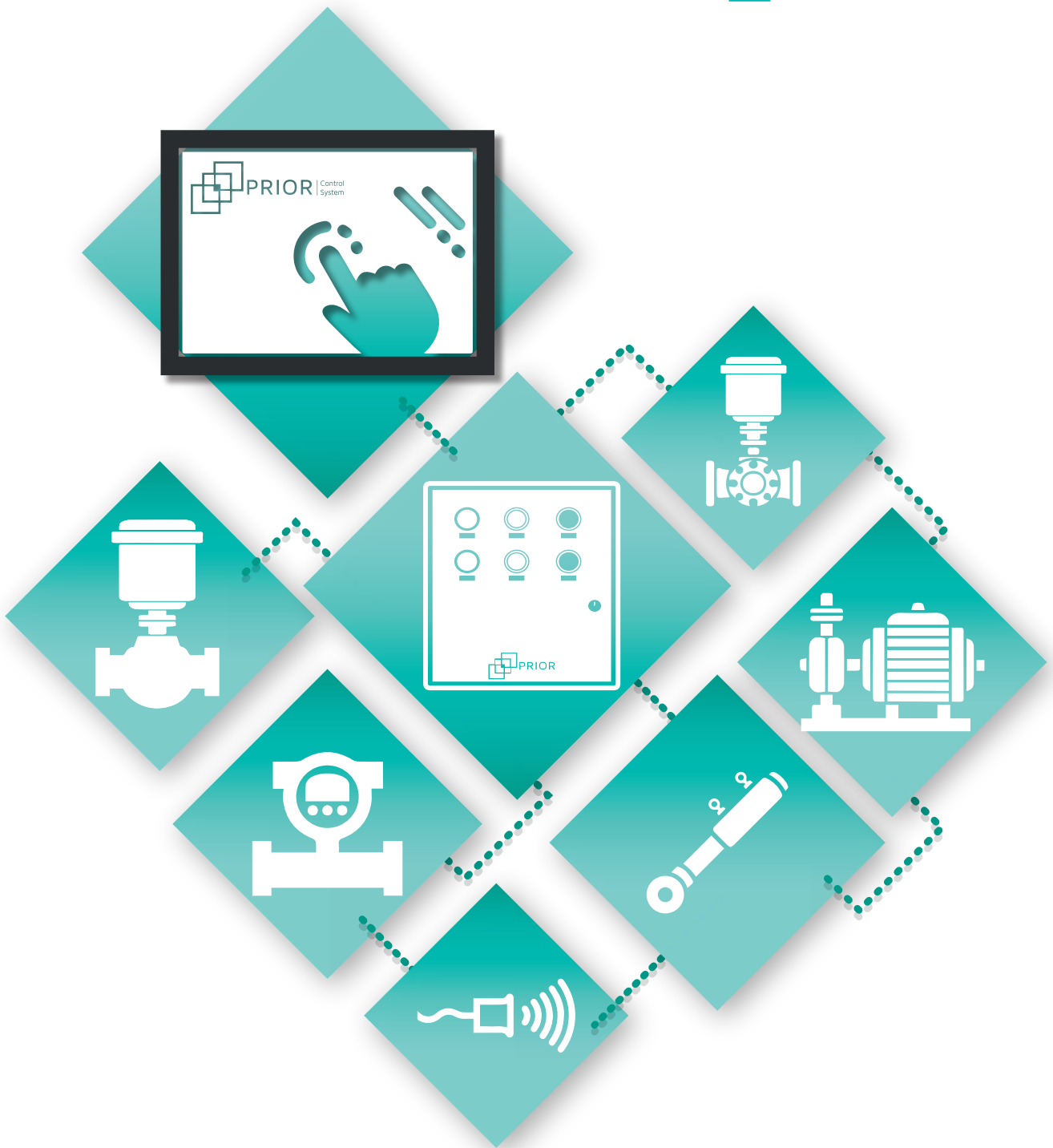




PRIOR | Control System

MONITORING AND CONTROL SYSTEM





INDEX

PRIOR CONTROL	4
PRIOR VAL	6
PRIOR MEQ	8
PRIOR SENS	9

PRIOR CONTROL

PRIOR is a system developed by Fernández Jove for automation and control of the following elements:

- Motor-driven valves
- Hydraulic and pneumatic maneuvering equipment
- Sensors
- Other equipments subject to control

PRIOR provides a global vision of the state of the equipment, offering the operator a complete control interface from one or several points of the installation. Thanks to its modular and flexible concept, PRIOR adapts to the specific needs of each project.

TOTAL INTEGRATION

PRIOR has different modules for predefined applications, such as **PRIOR|VAL**, **PRIOR|MEQ** and **PRIOR|SENS**.

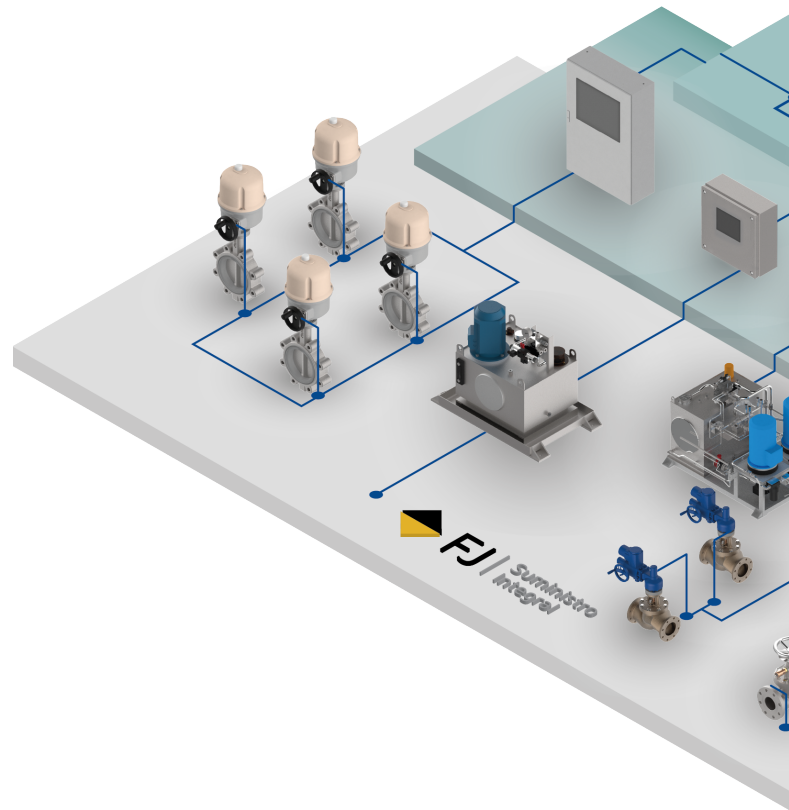
These modules can be combined to offer a complete control system that integrates different types of equipment.

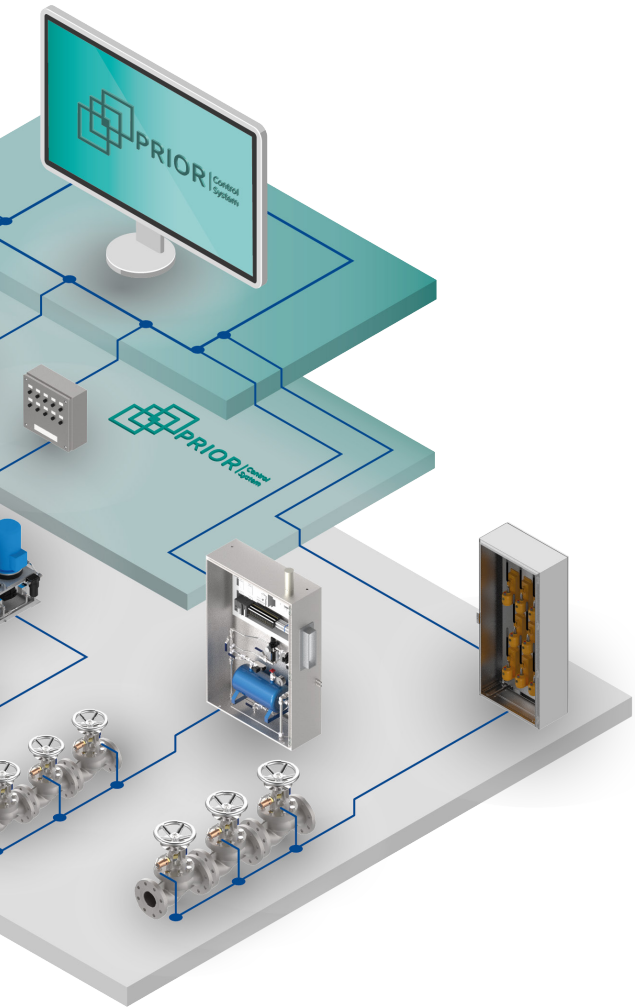
TOTAL CONTROL

PRIOR is capable of handling and managing different types of signals (analogue, digital, remote commands, etc.), as well as integrating automatisms that facilitate control by the user.

TOTAL CONNECTIVITY

PRIOR connects to different equipment and systems (both its own and those of others) using the most common universal communication protocols (ModBUS, Profibus, etc.), making it possible to take control from a superior entity such as the **IAS** – Integrated Automation Systems- (on a ship) or a **SCADA** (in a land-based installation).





FLEXIBILITY

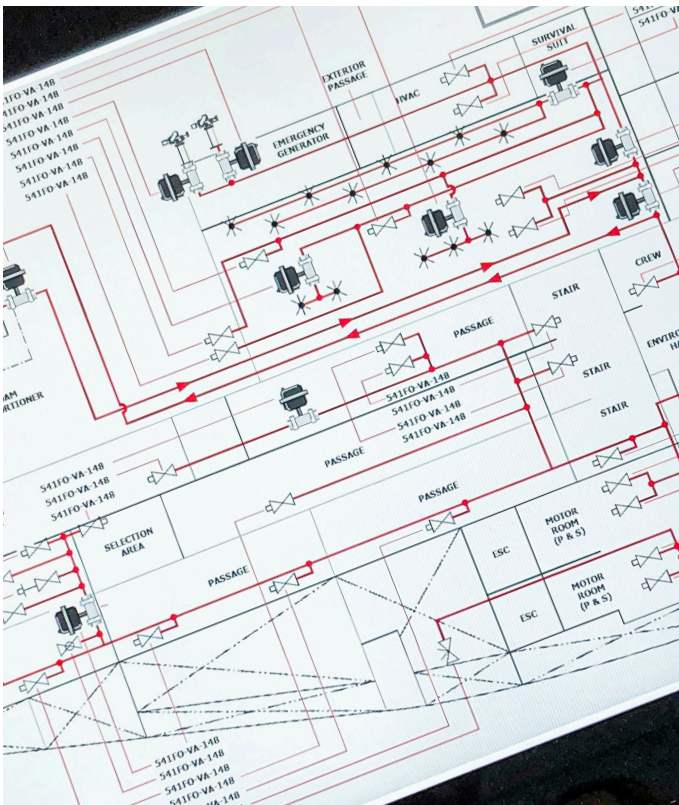
PRIOR is a modular and scalable system, fully adaptable to the needs of each project.

This allows customizing the control and monitoring options as required in each case, integrating different types of equipment and systems.

FEATURES OR EQUIPMENT	INCLUDED	OPTIONAL
PLC system based	X	
Control cabinets	X	
Remote control from other systems (IAS, SCADA, etc.)	X	
Remote control buttons		X
Control displays		X
Tabular layout of equipment	X	
Mimics/diagrams of the systems to be monitored		X
Redundancy of control displays		X
Permission management by users	X	
Alarm history	X	
On-screen embedded documentation		X
Connection to other equipment / systems		X
Power redundancy		X
IACS classification society certificate		X
Remote connexion		X

PRIOR|VAL

PRIOR|VAL is a specific solution from **PRIOR Control** for the monitoring and control of motor-driven valves.



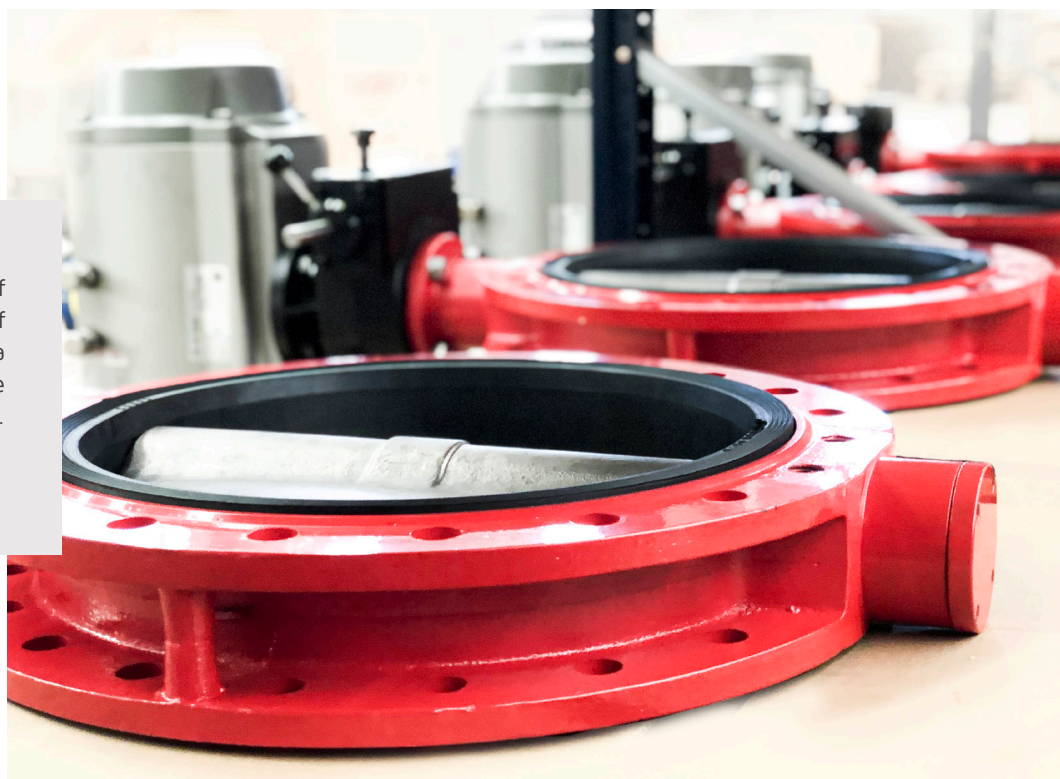
PRIOR|VAL maintains the philosophy of total integration, allowing to control valves with different types of actuators.

- ◆ Electric
- ◆ Hydraulic
- ◆ Pneumatic

Communication with the actuators can be carried out in different ways, wired or by field bus, depending on the characteristics of the actuators / technical requirements. **PRIOR|VAL** manages the different signals:

- ◆ Limit switches
- ◆ Volumetric indicators
- ◆ Position indicators
- ◆ Any additional indicator required

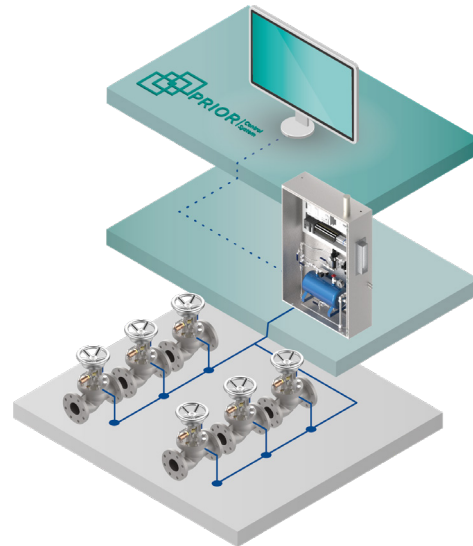
PRIOR|VAL allows the control of valves from the touch screens of the control stations, from where a global view of the systems and the status of the equipment is obtained.



PRIOR|VAL is adapted to the needs of your automatic operated valves project. Depending on the characteristics, **PRIOR** is custom designed and produced. A PRIOR|VAL control system generally consists of:

FLEXIBLE TYPE OF SYSTEM

- ◇ Control stations with touch screens.
- ◇ Mimics or diagrams of the fluid lines.
- ◇ Different advanced redundancy options for emergency situations:
 - ◇ Of the communication lines.
 - ◇ Control cabinets.
 - ◇ Of control screens.



ELECTRIC OPERATED ACTUATORS

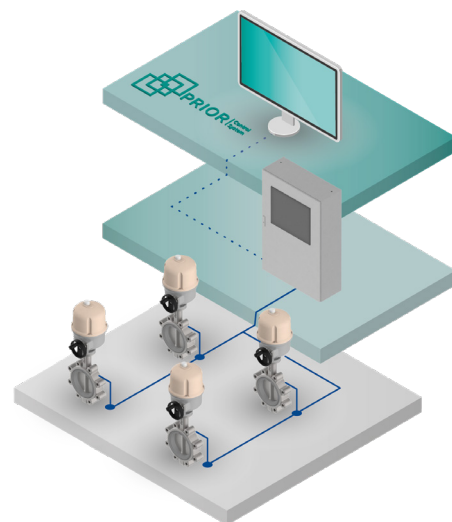
- ◇ Control cabinets with master stations.
- ◇ Connection to actuators with fieldbus or analogue and digital signals.
- ◇ Variable architectures, in loops or actuated valve chains.

HYDRAULIC OPERATED ACTUATORS

- ◇ Control cabinets with solenoid valves for fluid control.
- ◇ Hydraulic power units with back-up accumulators.

PNEUMATIC OPERATED ACTUATORS

- ◇ Solenoid valve cabinets for pressurized air control.
- ◇ Reserve accumulators.



PRIOR|MEQ

PRIOR|MEQ is a specific **PRIOR Control** solution for the monitoring and control of maneuvering equipment, mainly hydraulic and pneumatic.



Connecting your hydraulic or pneumatic equipment to **PRIOR|MEQ** will allow you to control it 100% remotely.

PRIOR|MEQ offers to the user a complete, comfortable and intuitive interface that allows him to operate the equipment reliably and safely. At the same time, PRIOR can collect critical data from the equipment (such as operating pressures, temperatures, etc.) and present it to the operator.

Recurrent **PRIOR|MEQ** applications:

- ◆ Hydraulic power unit management
- ◆ Control of pneumatic drives
- ◆ Control of hydraulic agitators

PRIOR|SENS

PRIOR|SENS is a specific PRIOR Control solution for monitoring sensor systems, transmitters or switches.



PRIOR|SENS

PRIOR supports signals from all types of sensors deployed in the field, compiling data and sampling the systems, communicating using the most widespread protocols on the market.

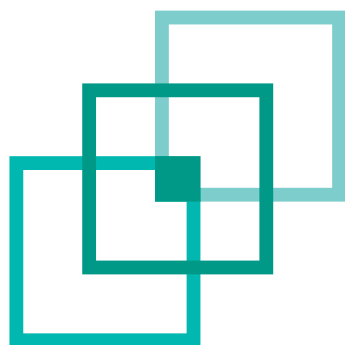
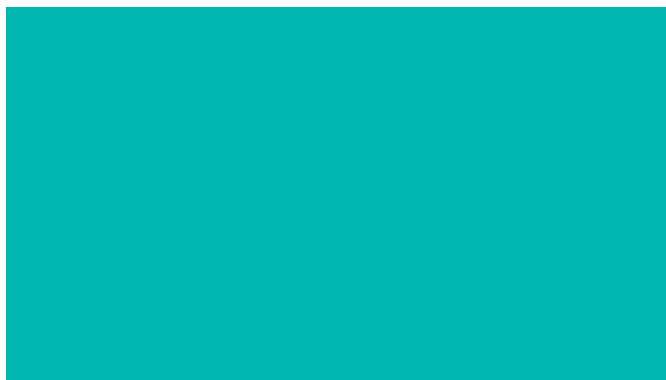
Typical applications for **PRIOR|SENS** include:

- ◆ Level measurements in fuel tanks.
- ◆ Measurement of temperatures and pressures in fluid lines.
- ◆ Data recording of complex hydraulic systems.
- ◆ High/Very high-level alarm systems in tanks.



Discover more:
www.PRIORCS.COM





PRIOR | Control System



WWW.FERNANDEZJOVE.COM

ventasfj@fjove.com



www.fjove.com